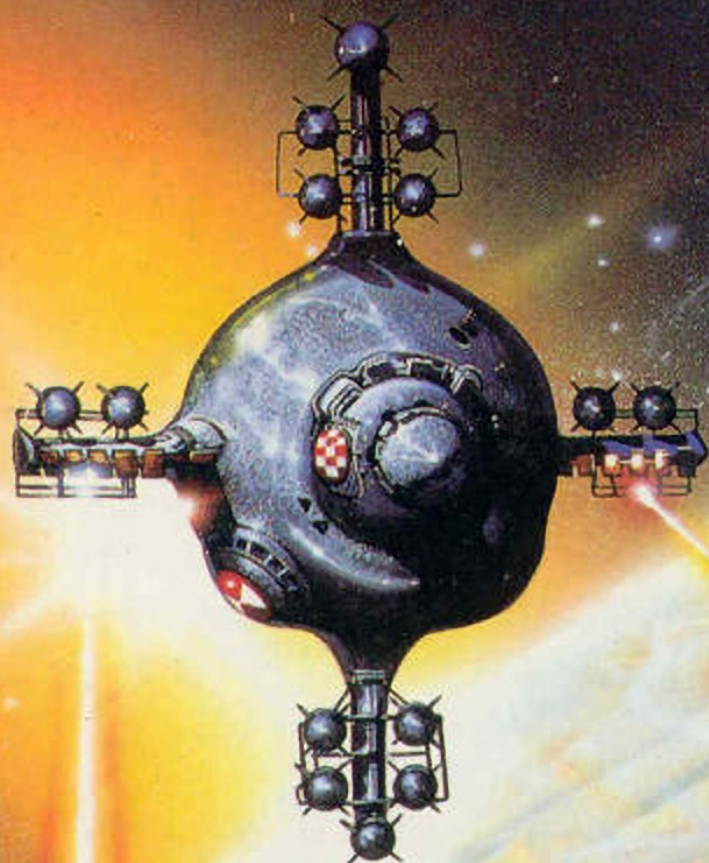


# WARHEAD



**AMIGA**  
A500, A1000,  
A2000 min. 512K  
required

**MPH**  
MOTION PICTURE HOUSE

WIN £350 WORTH OF  
EXCLUSIVE REVELL  
SHADOWHAWK  
MODEL KITS  
See inside  
for  
details



# WARHEAD

*"The most disturbing aspect of this conflict is that we do not know our enemy. We do not know their reasons for attacking us. We do not know who they are".*

It is the middle of the 21st Century and Earth has been violently attacked by an insect-like alien nation, from a near star system, killing billions of humans, swiftly wiping out countries and collapsing world states, throwing the Planet into the merciless hands of a nuclear winter.

*"We intend to turn the tables. We intend to protect ourselves by fighting back. At least we have a weapon: the FOE-57 spacecraft..."*

As the remaining humans turn to each other for combined strength and support, the Fist of the Earth world government turn to you to lead the ultimate battle.

*"The safety of the peoples of Earth rests in your hands..."*

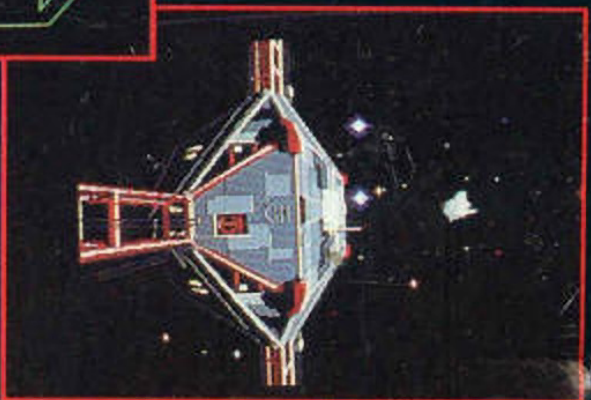


© MOTION PICTURE HOUSE

MARKETED AND DISTRIBUTED BY ACTIVISION (UK) LTD



Atari ST  
screens shown.



## WARHEAD

- A most challenging space simulator combining strategy and arcade action
- Over 30 hours of solid play
- 39 missions of space adventure

WARHEAD AMIGA



0 47875 80812 6